

# **4 Major Styles**

- **Perspective –**
- **Classicism –**
- **Secularism –**
- **Humanism –**

# Medieval Art



- Focus on the divine
- Flat, 2-D
- Same face/no detail
- inconsistent size (body vs. legs)



# Masaccio-Tribute Money

## 1427



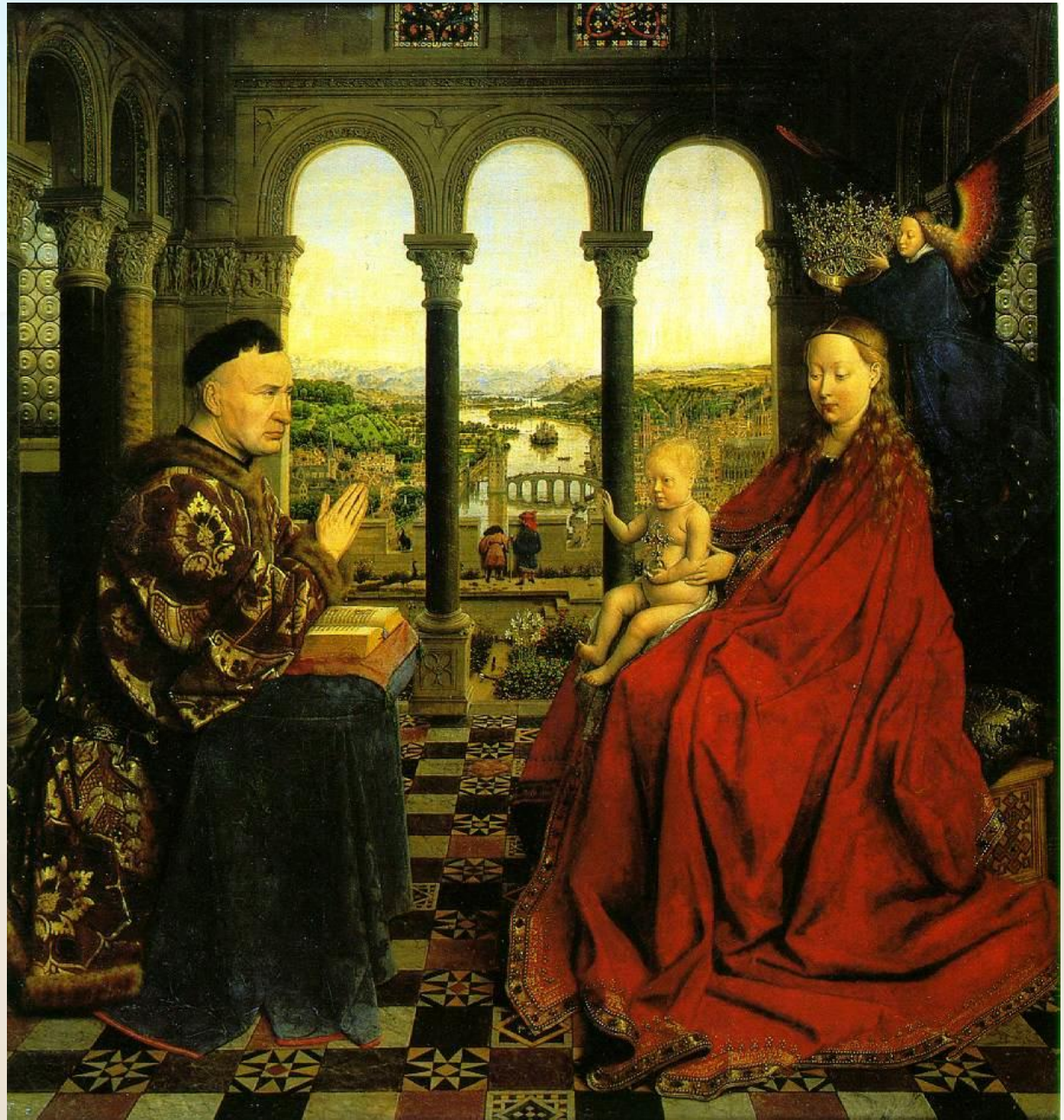


# Botticelli, The Birth of Venus





- **The  
Madonna  
of  
Chancellor  
Rollin**



# *The Doge, Leonardo Loredon*

Berlini, 1501

